

Model

544D10-55

TELEHANDLER



Performance

Rated Capacity

At 24 in. (610 mm) load center,
10,000 lb (4,536 kg)

Maximum Lift Height

55 ft (16.8 m)

Frame Leveling

8 degrees

Lift Speed (boom retracted)

Up: 11.9 sec
Down: 9.3 sec

Boom Speed

Extend: 18.3 sec
Retract: 17.6 sec

Travel Speed Forward

2WD 0-19 mph (30.6 kmph)
4WD 0-6.5 mph (10.5 kmph)

Drawbar Pull (Loaded)

18,400 lb (8,346 kg)

Operating Weight

With 48 in. (1.2 m) carriage and forks,
34,000 lb (15,422 kg)

Standard Specifications

Engine

Make and Model	John Deere 4045HF275
	Turbocharged and Aftercooled
Fuel	No. 2 Diesel
Cycles	4
No. of Cylinders	4
Displacement	276 cu in (4.5 L)
Rated Speed	2,500 rpm
Max. Gross BHP	125 hp (93 kW)
Fuel Tank	38 gal (144 L)

Engine Filters

Two-stage dry air cleaner — centrifugal pre-cleaner with continuous dust ejector plus replaceable dry filter element.

Visual service indicator.

Replaceable spin-on fuel filter. Full-flow replaceable spin-on engine oil filter.

Electrical System

Voltage: 12V

Alternator: 65 amp

Battery: 1050 cold cranking amps at 0°F

Hydrostatic Drive

6,300 PSI (43,437 kPa) closed loop with piston pump and motors.

All hydraulic connections ORS and Code 62 O-ring flanges.

Integral reservoir with implement hydraulics.

8 micron suction filter for charge pump.

Self-contained, swashplate design, variable displacement, over center, piston pump.

Neutral start switch. (Park brake must also be engaged to start.)

2WD — 4WD inching.

Audible back-up travel alarm mounted in counterweight area signals reverse movement.

Axles

Planetary hubs with piston motors on rear axle.

Piston motor-driven planetary front axle with high-bias differential.

Service Brakes

Hydraulic wet disc brake on each front wheel.

Hydraulic dynamic braking on front axle and both rear wheels.

Parking Brakes

Wet disc spring-applied electro/hydraulic release, fail-safe on both front wheels.

Light on dash indicates when brakes are on.

Tires

Standard: 14:00 x 24 — 12PR, G2 type.

Cab

Certified ROPS/FOPS structure with horn, back-up alarm and standard right side rear view mirror.

Forward, neutral, reverse lever on left of steering column.

Single foot pedal control provides both braking and inching for lifting while maneuvering vehicle.

Electro/hydraulic traction lock valve for superior tractive effort.

Steering

Hydraulic power steering with manual backup.

Rear wheel steering, 90° pivot around either front tire.

Outside turning radius is less than chassis length.

Instruments

Volt meter, hourmeter, engine oil pressure, temperature, fuel gauge.

All gauges protected by clear acrylic cover.

Controls

Grouped for operator comfort and convenience.

2WD and 4WD switch on dash.

Boom lift and crowd on single joystick.

Right-hand tilt and sway lever.

Foot throttle.

Floor mounted traction lock switch.

Hydraulic System-Implement

Single-section gear pump.

40 gal (151.4 L) system capacity.

8 micron filter with visual service indicator and suction strainer.

Lift, crowd, tilt and sway cylinders have safety checks to prevent dropping of load in the event of hose or other hydraulic failure.

Auxiliary Hydraulics

Used for all attachments equipped with cylinders or other hydraulic components. Consists of valves, controls and hydraulic lines.

Accessories & Options

Cab Enclosure

Light Group

Cold Weather Package

Tire Options

Foam-Filled
Rock

Left Hand Tilt/Sway Control

Tilt on Joystick

Pintle Type Tow Hook

Attachments

Standard Carriage

48 in. (1.2 m), 66 in. (1.7 m) or 72 in. (1.8 m)

Side Tilt Carriage

48 in. (1.2 m) or 66 in. (1.7 m)

72 in. Swing Carriage

100° or 180°

100° Drywall Swing Carriage

72 in. (1.8 m)

Pallet Forks

2 x 6 x 48 in.
(51 mm x 152 mm x 1.2 m)

Cubing Forks

2 x 2 x 48 in.
(51 mm x 51 mm x 1.2 m)

Vertical Mast

6 ft (1.8 m)

100° Swing Mast

6 ft (1.8 m)

Truss Boom With or Without Winch

10 ft (3.0 m)

Bucket

0.75 cu yd (0.57 m³) or
1.25 cu yd (0.95 m³)

Quick Switch Work Platform

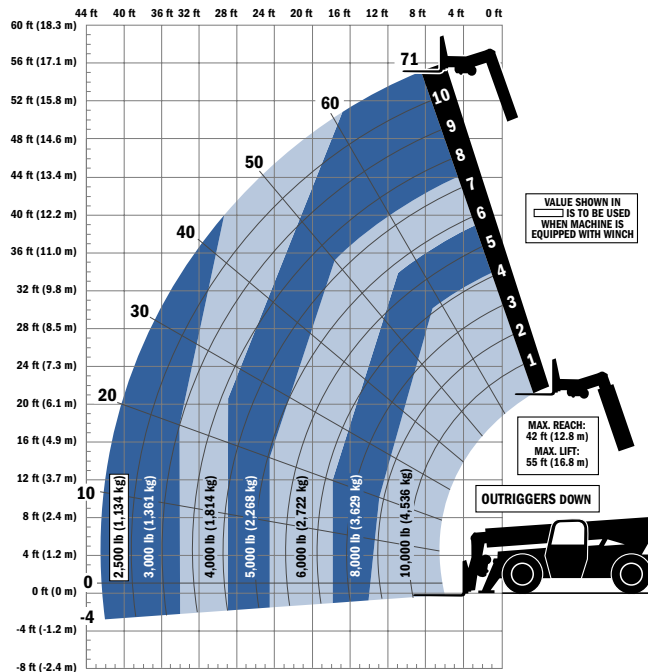
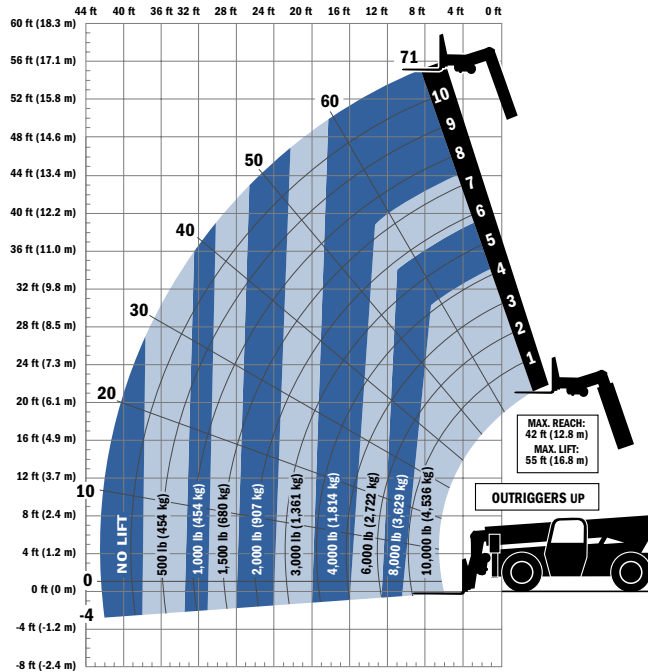
Fork Mounted Work Platform

Crane Hook

Model 544D10-55 TELEHANDLER

Dimensions

Length (less forks)	237 in. (6.01 m)
Width	98.8 in. (2.50 m)
Height	98 in. (2.48 m)
Wheelbase	135 in. (3.42 m)
Ground Clearance	20.8 in. (528 mm)
Outside Turning Radius	175 in. (4.44 m)
Max. Reach from Front Tires to 24 in. (610 mm) Load Center	42 ft (12.8 m) 42 ft (12.8 m)



IMPORTANT

Rated lift capacities shown are with machine equipped with carriage and pallet forks. The machine must be level on a firm surface with undamaged, properly inflated tires. Machine specifications and stability are based on rated lift capacities at specific boom angles and boom lengths. (If specifications are critical, the proposed application should be discussed with your dealer.)

DO NOT exceed rated lift capacity loads, as unstable and dangerous machine conditions will result.

DO NOT tip the machine forward to determine the allowable load.

Use only JLG approved attachments with proper material handler model/attachment load capacity charts displayed in the operator's cab. OSHA requires all rough terrain forklift operators be trained according to OSHA 29 CFR 1910.178 (1).



JLG Industries, Inc.

1 JLG Drive
McConnellsburg, PA 17233-9533
Telephone 717-485-5161
Toll-free in US 877-JLG-LIFT
Fax 717-485-6417
www.jlg.com

An Oshkosh Truck Corporation Company

Due to continuous product improvements, JLG Industries reserves the right to make specification and/or equipment changes without prior notification. This machine meets or exceeds ASME B56.6-2005 as originally manufactured for intended applications.

Form No.: SS-544D-0605-15M
Part No.: 3132204
R050703
Printed in USA